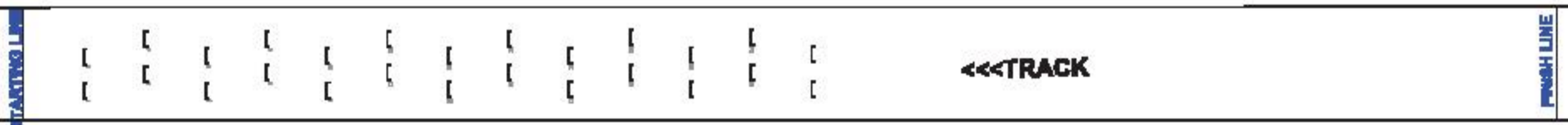
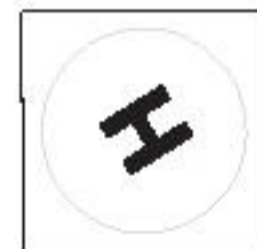
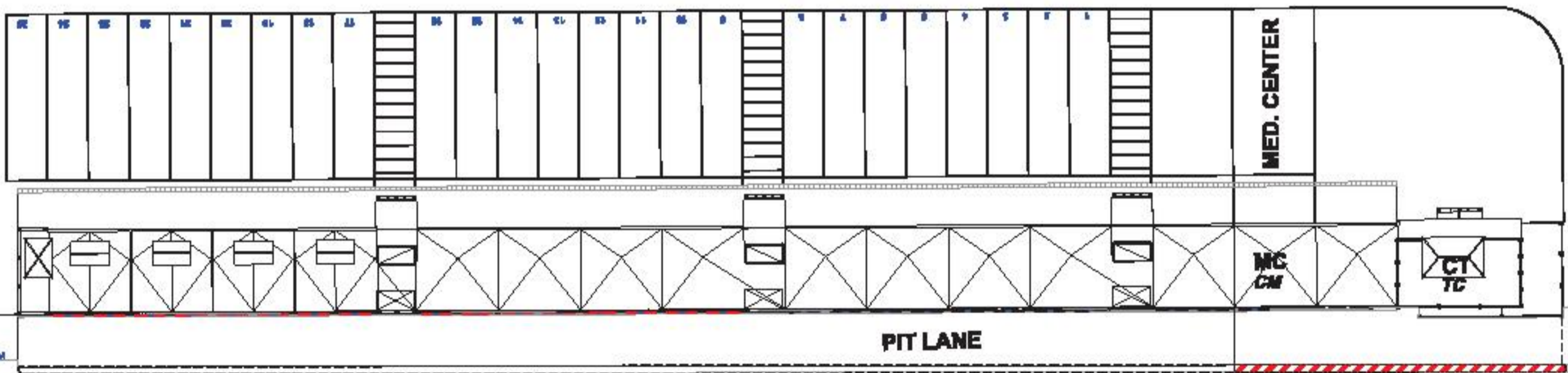
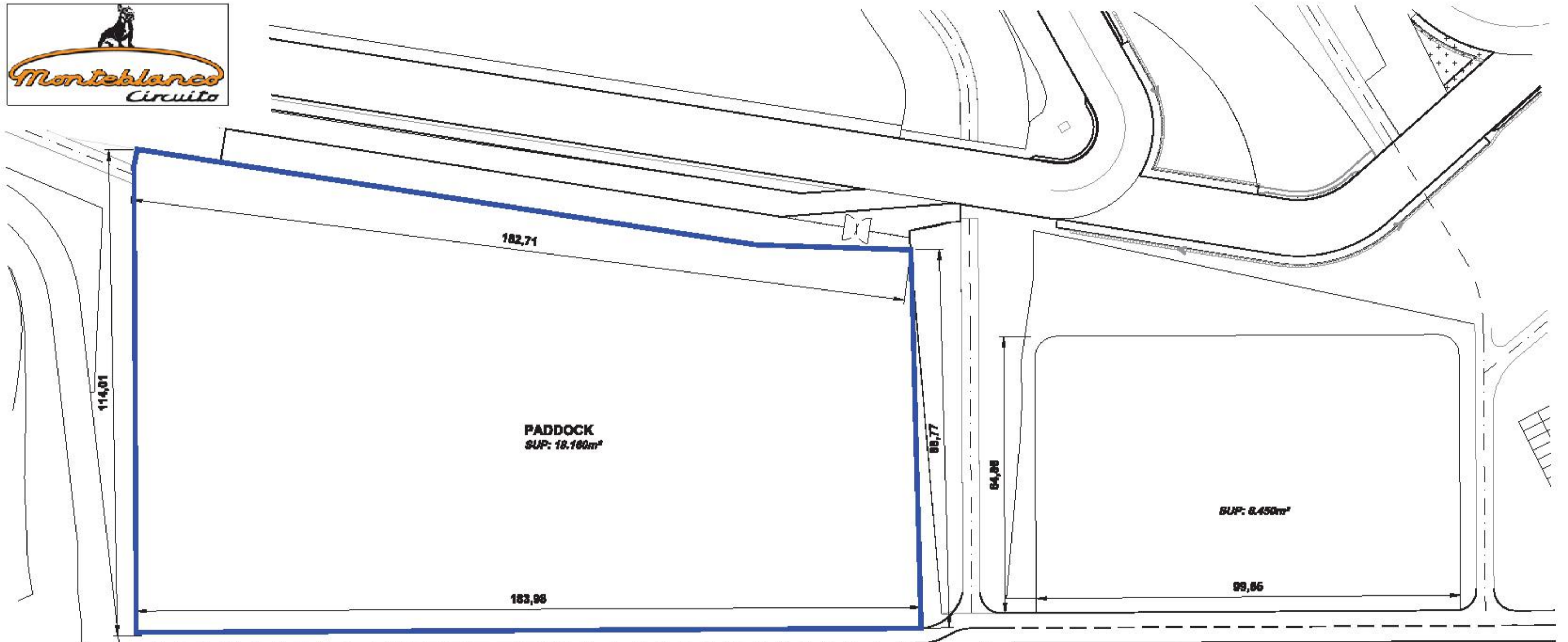
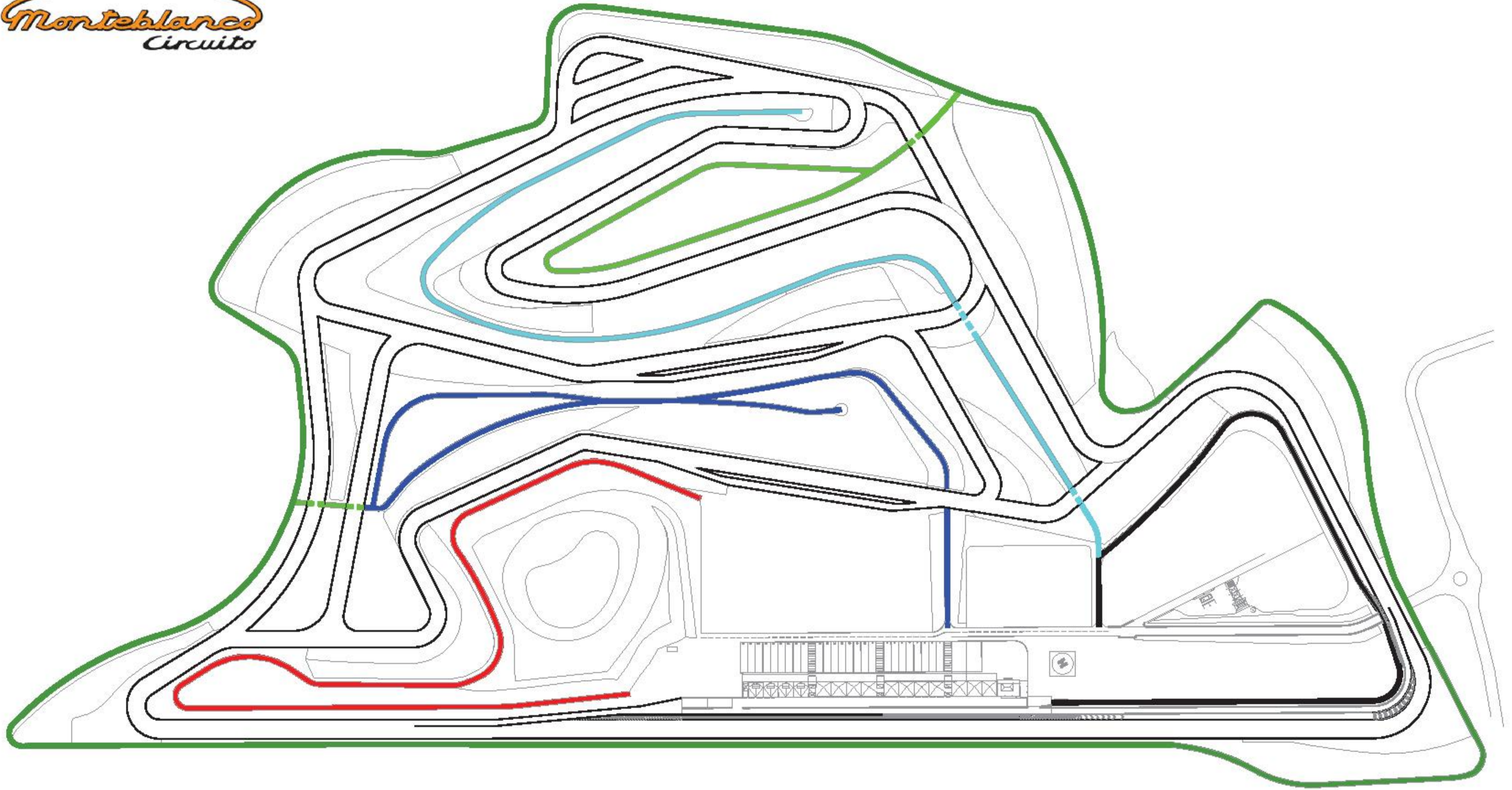


**TRACK 1 / VARIANTE 1**  
**4.432,30m.**

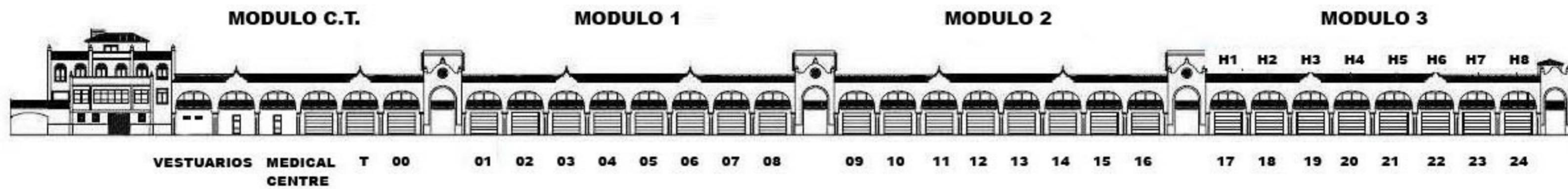


**PADDOCK**

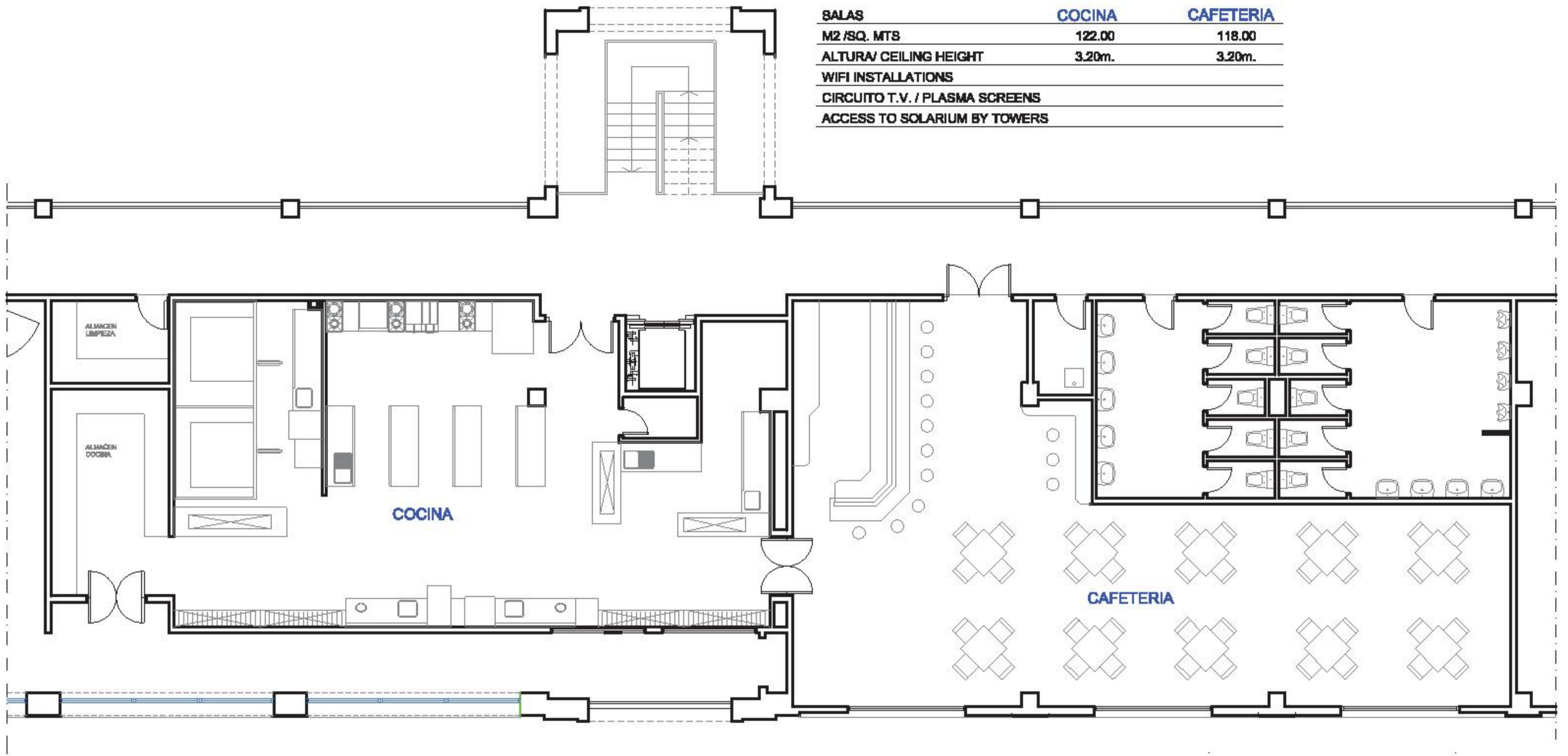


-  EXTERIOR
-  INTERIOR P.K. 2500 DE C12 A C15
-  PASO INFERIOR/ CIRCUITO INTERIOR
-  INTERIOR DEL LAGO DE C1 A C5
-  INTERIOR DEL PUENTE DE C16 A C18
-  INTERIOR DEL P.K. 2900 DE C12 A C15

**SERVICE ROADS**  
**VIAS DE SERVICIOS**



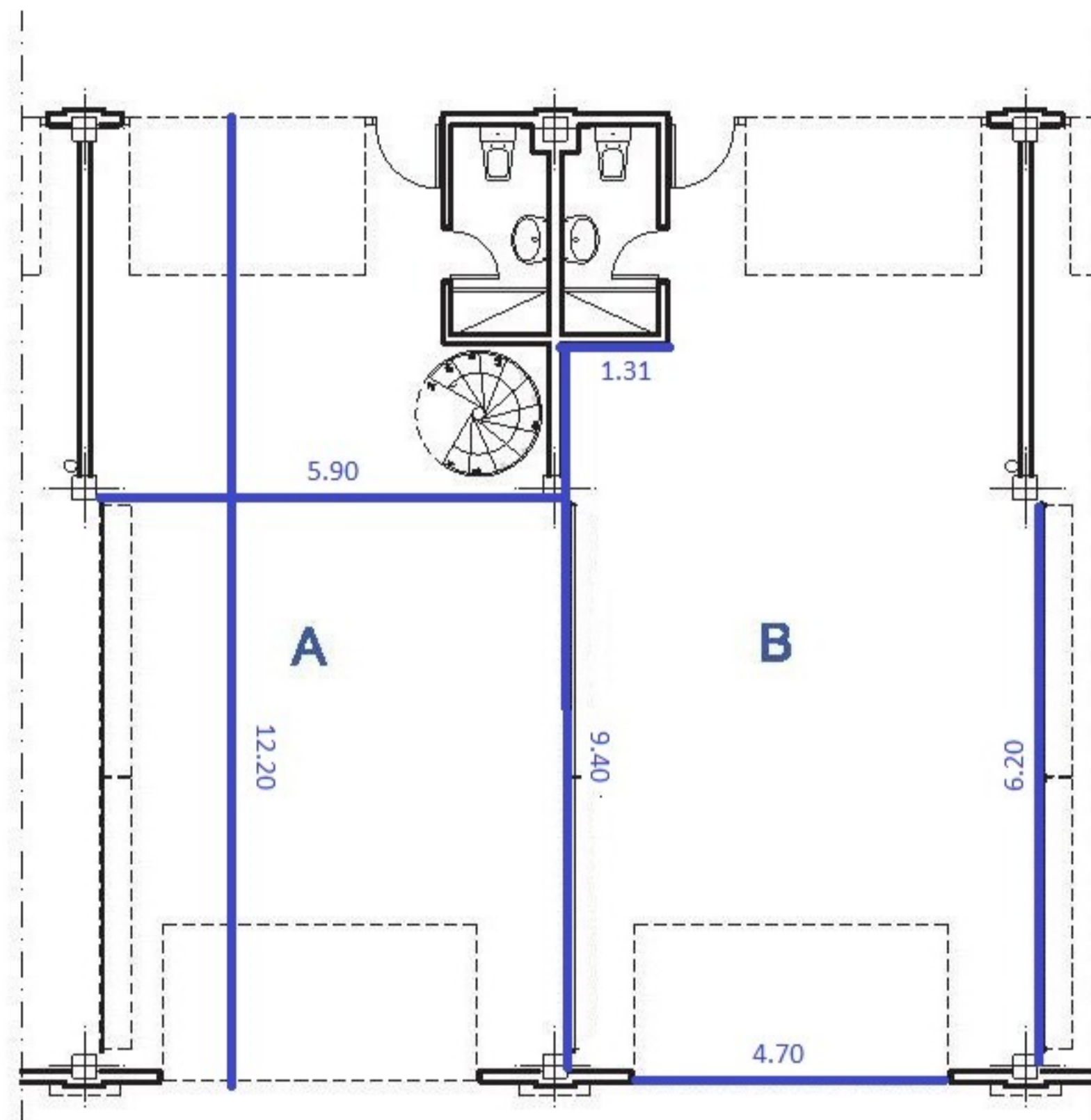
SALAS	COCINA	CAFETERIA
M2 /SQ. MTS	122.00	118.00
ALTURA/ CEILING HEIGHT	3.20m.	3.20m.
WIFI INSTALLATIONS		
CIRCUITO T.V. / PLASMA SCREENS		
ACCESS TO SOLARIUM BY TOWERS		



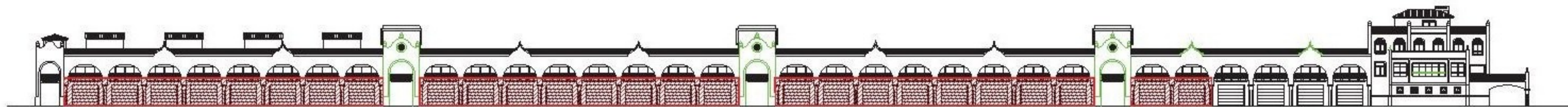
**CAFETERIA- COCINA**



BOXES	A	B
M2 /SQ. MTS	70.50	70.50
ALTURA/ CEILING HEIGHT	3.40m.	3.40m.
WIFI INSTALLATIONS		
CIRCUITO T.V. / PLASMA SCREENS		
26 MODULAR BOXES		



**BOXES/ PIT GARAGES**



### CONTACT

CIRCUITO MONTEBLANCO

Km.48 Motorway A-49

HUELVA / SPAIN

TEL.: +34 902 500 552

FAX: +34 959 026 483

E-MAIL: [info@circuitomonteblanco.com](mailto:info@circuitomonteblanco.com)

[www.circuitomonteblanco.com](http://www.circuitomonteblanco.com)

### GPS coordinates:

Entrance gate: Lat: 37° 21' 32" / Long: 6° 33' 53"

Helipad: Lat: 37° 21' 32" / Long: 6° 34' 14"



### Directions from Sevilla airport:

- Take motorway A4 towards Sevilla
- After 1km, take the exit towards HUELVA / ISLA MÁGICA
- You will then bypass Sevilla by the north following the sign Isla Mágica and then Huelva
- Leave Sevilla direction Huelva on the motorway A49
- Look out for the RADAR 3km before the exit! Approx: km 45
- Take the exit N°48 / Bollulos - La Palma del Condado
- Out of the ramp, turn to right and go over the motorway bridge towards Bollulos.
- Immediately on the other side of the bridge make a U turn to the right in front the bar "la Frontera" and follow the road parallel to the motorway.
- Follow the yellow signs "Circuito Monteblanco" and you get to our main gate.

### Directions from Faro airport:

- Leave Faro direction Huelva (SPAIN) on the motorway E-1 and later A49
- Look out for the RADAR before the exit!
- Take the exit N°50 / Bollulos - La Palma del Condado
- Go straight towards Bollulos
- Turn to left towards Bollulos.
- Immediately make a U turn to the right in front the bar "la Frontera" and follow the road parallel to the motorway.
- Follow the yellow signs "Circuito Monteblanco" and you get to our main gate